

hy prevention[®]

THE SOLUTION FOR PATIENTS AT RISK OF HIP FRACTURE

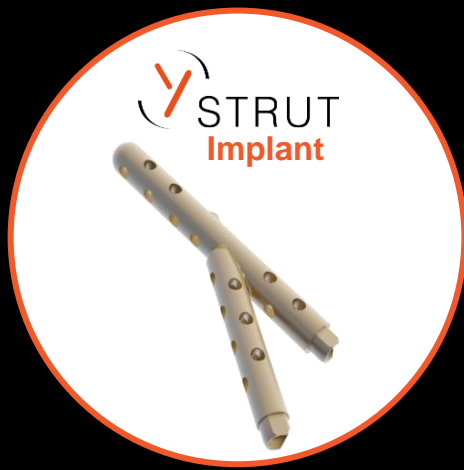


PROXIMAL
FEMUR SYSTEM



A STRUTPLASTY[®] TECHNIQUE FOR BONE CONSOLIDATION

www.hyventionusa.com



PRODUCT DESCRIPTION

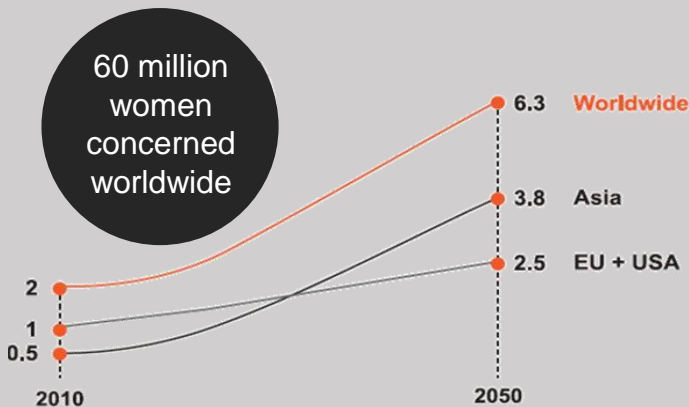
- Implantable medical device composed of 2 implants connected in situ, made of radio-transparent PEEK polymer
- Range of sizes to fit patient's anatomy
- Combined with PMMA bone cement
- Bone reinforcement¹⁴



HIP FRACTURE : A GLOBAL HEALTH ISSUE

More than 2 million hip fractures annually worldwide, over 6 million in 2050^{1,2} with growing and aging population

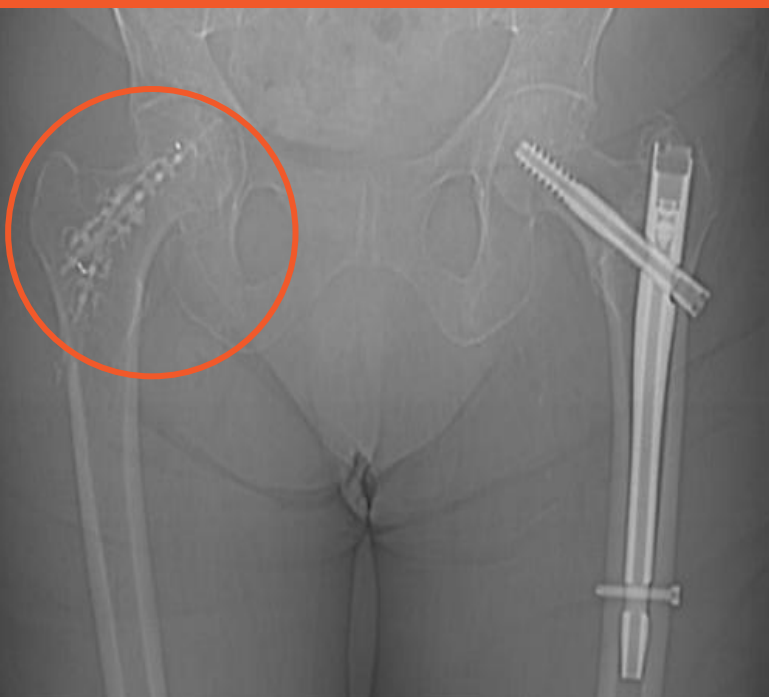
TRAUMATOLOGY



- High risk of **contralateral hip fracture**
 - 9% at 1 year
 - Up to 20 % at 5 years³
- Serious **loss in quality of life** : chronic pain, reduced mobility and increasing of **dependence**⁴
- **Patients' mortality** 2-fold³
- High incremental **costs** for hip fracture treatment⁵

⇒ Surgical prevention : a potential solution to avoid contralateral hip fracture with associated morbidity and costs^{6,7}

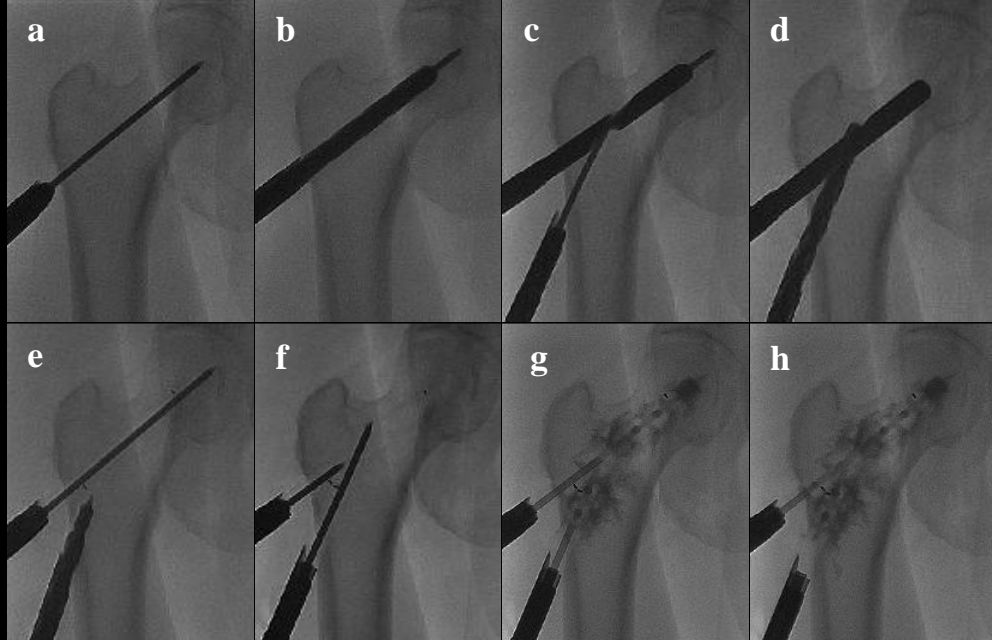
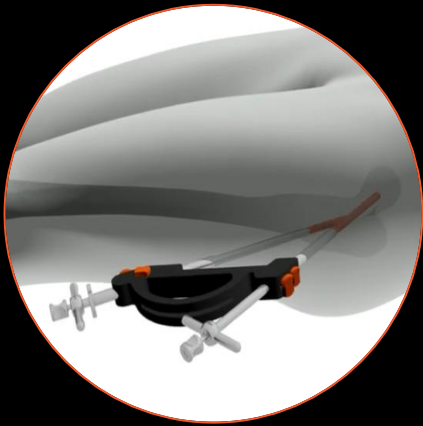
TRAUMATOLOGY INDICATION



STRUT is indicated for **contralateral** percutaneous internal fixation of proximal femur, in osteoporotic patients with a low energy pertrochanteric fracture on the first side

- **Same surgical time** for the fracture treatment and the contralateral procedure **or prophylactic surgery in a second time** (within 120 days after the fracture treatment)
- Clinical experience^{15,16} :
1st patient in February 2013

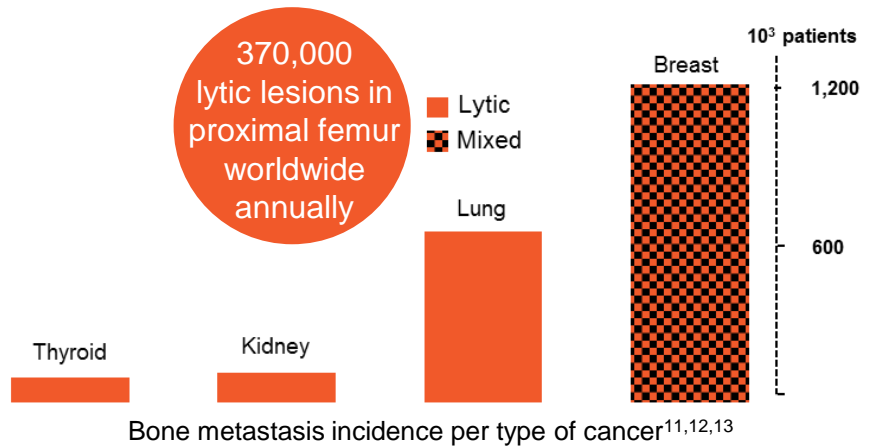
MINIMALLY INVASIVE PROCEDURE



HIP FRACTURE : A GLOBAL HEALTH ISSUE

25% of metastatic bone lesions occurs in the proximal femur, patients at high risk of pathological fractures⁸

- **Bone is the third location of metastases** after the lungs and liver. The origin of lytic bone metastases varies and is often linked to a primary tumour of the thyroid, kidney, lung or breast⁸
- Severe consequences of pathological fractures : **patients' life expectancy affected** and **loss of quality of life⁹**



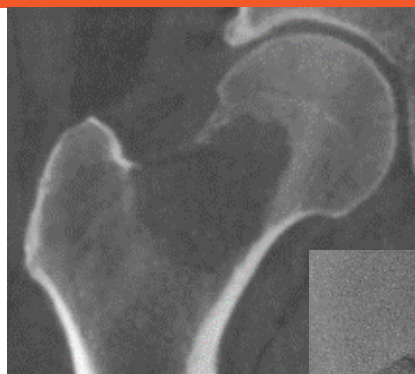
⇒ Various surgical techniques, like standard osteosynthesis fixation, are being performed to treat lytic bone lesions, prevent these fractures and improve patients' quality of life¹⁰

ONCOLOGY INDICATION

Y-STRUT is indicated for percutaneous internal fixation for **impending pathological fracture** of proximal femur - act of last resort (ultima ratio)

- Minimally invasive procedure allows to continue the **chemotherapy treatment**
- **Short hospitalization duration** (mean 2.3 days)
- PEEK polymer material allows **local radiotherapy**
- Clinical experience^{15,17}:

1st study completed in 2016 on **10 patients followed during 1 year**





REFERENCES

1. Cooper et al. Osteoporos Int. 1992 Nov; 2(6):285-9
2. <http://www.indexmundi.com>
3. Ryg et al. J Bone Miner Res. 2009 Jul; 24(7):1299-307
4. Keene et al. BMJ. 1993; 307:1248
5. Melton III et al. Osteoporos Int. 2003; 14: 383-388
6. Giannini et al. Clin Cases Miner Bone Metab. 2011;8(1):51-54
7. Ferrari et al. Arch Osteoporos. 2016;11(1):37
8. Hage et al. Orthop Clin North Am. 2000; (31):515-528
9. Harvey et al, Clin Orthop Relat Res. 2012 Mar; 470(3):684-91
10. Arvinius et al. Int Orthop. 2014; 38:129–132
11. Coleman. Clin Cancer Res. 2006;12:6243s-6249s
12. <http://globocan.iarc.fr>
13. Kenan et al. Cancer Medicine. 6e 2003. pp. 2477-9
14. Szpalski et al. Clin Biomech. 2015 Aug; 30(7):713-9
15. Cornelis et al. J Orthop Surg Res. 2017 Feb 9;12(1):27
16. Szpalski et al. J Osteopor Phys Act. 2017; 5:2 DOI: 10.4172/2329-9509.1000202
17. Cornelis et al. Cardiovasc Intervent Radiol. 2017 Jul;40(7):1070-1076
18. Reynders-Frederix P et al. Bioceram Dev Appl 2018, 8:1
19. Reynders-Frederix P et al. Acta Ortho Belgica, 2022 Mar;88(1):11-16

hy prevention®

www.hyventionusa.com

USA

1411 Broadway Fl 16
usa@hyvention.com
T. +1 (772) 228 3218

Medical device

For more information, see the instructions for use

PATENTED

Licensed in Brazil

Granted Breakthrough Device by the FDA

(Not FDA cleared, not CE marked)



PLA-HYP01-EN V08